

Rapid Fire Seal RFS 640

Rapid fire resistant sealant



ADVANTAGES

- Water based
- Flexible set
- Contains mould growth inhibitor
- Freeze - thaw capabilities
- Paintable
- Accelerated age and humidity tested
- Low VOC
- Spray or brush applied
- Excellent smoke seal
- Water resistant
- Asbestos and solvent free
- Can be used for internal applications and for conditions where dynamic movement may occur.



Head of wall application



Curtain wall application

BUILDING MATERIALS

- Flexible wall constructions
- Rigid floor and wall constructions
- Flexible wall
- Masonry
- Concrete

ASSESSMENT/APPROVAL



American Standard

ASTM E 814
(UL 1479)

ASTM E 84
(UL 723)

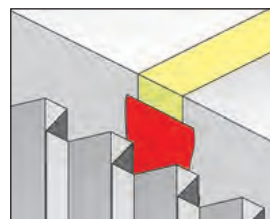
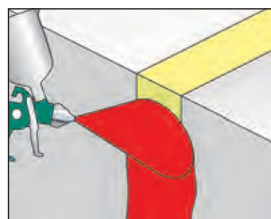
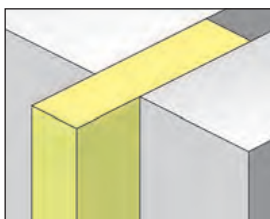
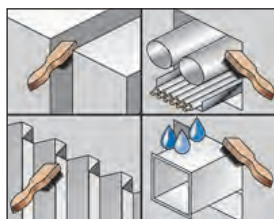
ASTM E 1966
(UL 2079)

APPLICATIONS

- Curtain wall/slab edge: 8" (200 mm)
- Head of wall: 4" (100 mm)
- General construction joints: 8" (200 mm)
- Cable tray: 24" x 4" (600 mm x 100 mm)
- Steel pipes: 8" (200 mm)

FUNCTIONING

- RFS 640 is a spray grade one-part water-based, fire rated sealant, which has been designed to provide smoke and fire protection on construction joints and service penetrations in both vertical and horizontal applications.
- Provides up to 3 hours fire rating (also in accordance with ASTM E 2307).
- Meeting the new requirements of ASTM E 1399, RFS 640 has been cyclic tested up to 500 times.
- Can be used for internal applications and for conditions where dynamic movement may occur.
- RFS 640 has also been tested at positive pressure with a minimum 0.01 in. (2.5 mPa) water i.a.w UL 2079 test standards.



INNER ENGINEERING PRODUCTS & SYSTEMS PVT LTD



MAHARASHTRA



GOA



GUJARAT



MADHYA PRADESH



CHHATTISGARH

SPECIALISED CHANNEL PARTNER FOR WEST REGION

INSTALLATION



1. Clean all surfaces free from loose debris and contaminants, and install required backing material as per approved system.
2. Apply RFS 640 to the required parameters making sure that it is in contact with all surfaces to provide maximum adhesion.
3. Tool sealant to a defect-free finish using a wetted trowel or putty knife.

SPECIFICATIONS

Item	Art.-No.	Contents [l]	Sales unit [pcs]
RFS 640	516539	19	1

TECHNICAL DATA

Chemical base	Water-based
Density	Approx 1.25 g/cm ³
Application temperature	+5 °C to +40 °C
Skin-forming time at 25 °C	Approx. 30 - 45 minutes*
Curing time at 25 °C	Approx. 5 - 7 days*
Storage temperature	+2 °C to +49 °C
Movement capability	Up to 50 %**
Water resistant	Yes***
Shelf life	36 months from manufacturing (under recommended conditions)
pH Value	7 to 8
Sound transmission class (dB) Tested in a UL 411 wall assembly to ASTM E90	65 dB
Surface burning characteristics ASTM E 84 UL 723 Tunnel Test	Flame spread: 0 Smoke index: 0
Colour	Red

* Skin-forming and curing time is dependant on substrate, air humidity and weather conditions.
** Movement capability depends on UL listed system and configuration.
*** Is water resistant in accordance with UL 2079.

APPLICATION DATA

Joint width [inch]	Joint width [mm]	Ft/gallon	Ft/pail	LM/gallon	LM/pail
0.25	6	198	1,325	89	404
0.50	13	164	1,099	74	335
0.75	19	141	941	63	287
1.00	25	124	830	56	253
1.25	32	109	731	49	223
2.00	51	82	548	37	167
4.00	102	49	328	22	100
6.00	152	35	233	16	71
8.00	203	27	180	12	55

The above table provides an approx. yield for a coverage of 1/16" (1.5 mm WFT) with a 1/2" (12.5 mm) overlap.

fischer Building Materials India Pvt. Ltd.,
Level IV and Level V, Unit No. 401 and 501,
Prestige Garnet, Ulsoor Road, Bangalore,
Karnataka, India - 560042.
Phone – 080-4151 1991/92/93
Toll Free No. : 1800 121 7188
www.fischer.in | info@fischer.in



INNER ENGINEERING PRODUCTS & SYSTEMS PVT LTD

- Registered Office (Ahmedabad)
Ground Floor, Showroom No. 3, Brooklyn Tower, Next to YMCA Club, S.G Highway, Ahmedabad - 380015, Gujarat, India.
- Branch Offices (Pune - Vadodara)
Office No 501, Fifth Floor, Archway, Plot No 5, Sopan Baug Society, Survey No 2/1, Balewadi, Pune- 421045, Maharashtra, India.
713/A, Atlantis Heights, Opp. Swagat Petrol Pump, Nr, Genda Circle, Vadodara - 390021, Gujarat, India.