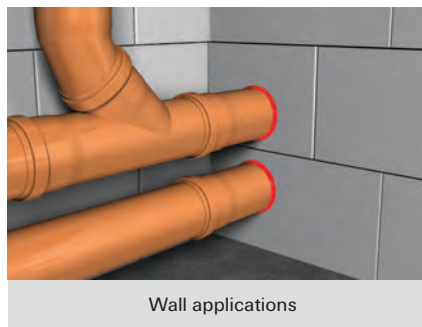
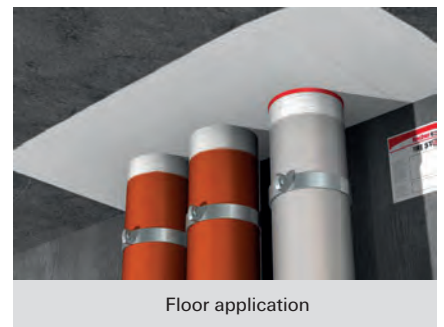


Intumescent Pipe Wraps FiPW

An intumescent single or endless wrap for sealing flammable pipes



Wall applications



Floor application

ASSESSMENT/APPROVAL



British Standard

BS 476 - 20

BS EN 1366-3



ADVANTAGES

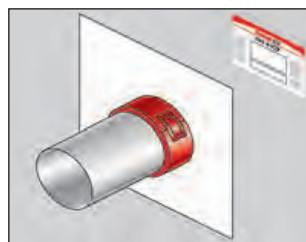
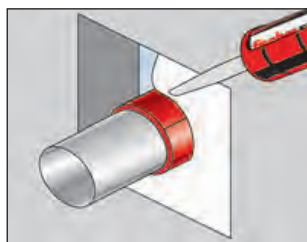
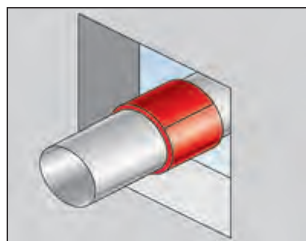
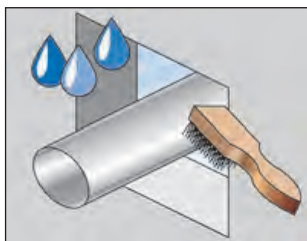
- Efficient and effective for sealing of pipe openings in floors and walls
- Easy to fit
- Moisture resistant
- No mechanical fixing required
- Economical solution
- Up to 4 hours fire resistance
- Asbestos and halogen free
- Available on a roll for more flexibility in pipe diameters

APPLICATIONS

- Non-metallic pipes
- Polyvinyl Chloride PVC
- Chlorinated Polyvinyl Chloride cPVC
- Medium-density Polyethylene MDPE
- High-density Polyethylene HDPE
- Acrylonitrile Butadiene ABS

FUNCTIONING

- FiPW is a flexible composite strip, which is composed of thermoplastic component containing intumescent graphite in a synthetic compound and enclosed in an outer polyethylene cover.
- Can also be used as a cast-in solution. For large openings, use in conjunction with FCPS or FFSC.



INNER ENGINEERING PRODUCTS & SYSTEMS PVT LTD



MAHARASHTRA



GOA



GUJARAT



MADHYA PRADESH



CHHATTISGARH

SPECIALISED CHANNEL PARTNER FOR WEST REGION

INSTALLATION

1. Clean all contact surfaces so they are free from loose debris and contaminants.
2. Ensure services are sufficiently supported as per approved system or local building codes.
3. Choose the correct size of FiPW or FiPW-E in accordance with the pipe diameter.
4. Wrap FiPW or FiPW-E around the pipe and fix tightly in required position.
5. Backfill with FIAM or FFSC as per detailed instruction or approved system.

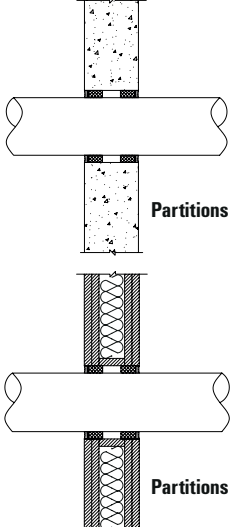
SPECIFICATIONS

Item	Art.-No.	Fits pipe-Ø	Fire rating	Sales unit [pcs]
FiPW E / 2 mm (25 meter roll)	539608	30 - 200	2	1
FIPW 2/30-32	052546	30 - 32	2	20
FIPW 2/38-40	052547	38 - 40	2	20
FIPW 2/55	052548	55	2	20
FIPW 2/63	052560	63	2	20
FIPW 2/75	052561	75	2	20
FIPW 2/82	052562	82	2	20
FIPW 2/110	052563	110	2	20
FIPW 2/125	052890	125	2	20
FIPW 2/160	052891	160	2	20
FIPW 2/200	053000	200	2	20

TECHNICAL DATA

State	Solid
Colour	Black inner component in outer red carrier
Odour	Odourless
Density	1.3 kg/m ³
Expansion ratio	1 : 25
Significant expansion occurs at temperature	> 180 °C
Application temperature	-40 °C to 130 °C minutes
Available sizes	> 30 mm and max. up to 200 mm
Storage temperature	N/a
Shelf life	60 months
Dimensions (thickness x diameter)	4 mm up to 63 mm - 6 mm up to 110 mm - 10 mm thereafter ...; 2 mm for 25 meter roll.

APPLICATION DATA

	Configuration for up to 120 min.			
	Outer pipe diam. [mm]	No. wraps	Thickness	Length (theoretically) for FiPW E [mm]
	40	1	2	126
	55	2	4	352
	63	2	4	402
	75	2	4	478
	82	2	4	521
	90	3	6	867
	110	3	6	1055
	125	4	8	1608
	160	4	8	2047
	200	5	10	3203

fischer Building Materials India Pvt. Ltd.,
 Level IV and Level V, Unit No. 401 and 501,
 Prestige Garnet, Ulsoor Road, Bangalore,
 Karnataka, India - 560042.
 Phone - 080-4151 1991/92/93
 Toll Free No. : 1800 121 7188
www.fischer.in | info@fischer.in



INNER ENGINEERING PRODUCTS & SYSTEMS PVT LTD

Registered Office (Ahmedabad)

- Ground Floor, Showroom No. 3, Brooklyn Tower, Next to YMCA Club, S.G Highway, Ahmedabad - 380015, Gujarat, India.
- Branch Offices (Pune - Vadodara)
- Office No 501, Fifth Floor, Archway, Plot No 5, Sopan Baug Society, Survey No 2/1, Balewadi, Pune- 421045, Maharashtra, India.
- 713/A, Atlantis Heights, Opp. Swagat Petrol Pump, Nr, Genda Circle, Vadodara - 390021, Gujarat, India.