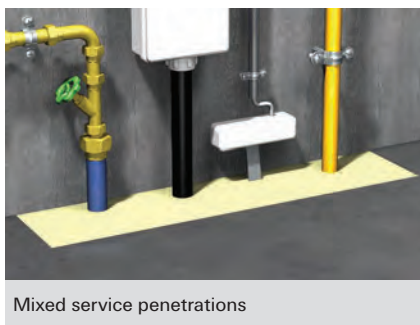


### Structural fire resistant seal for floors and walls



Mixed service penetrations



Mixed service penetrations

#### ASSESSMENT/APPROVAL



British Standard

BS 476-20

BS EN ISO 10140-3:1995

BS EN 1366-3



American Standard

ASTM E 814  
(UL 1479)

#### ADVANTAGES

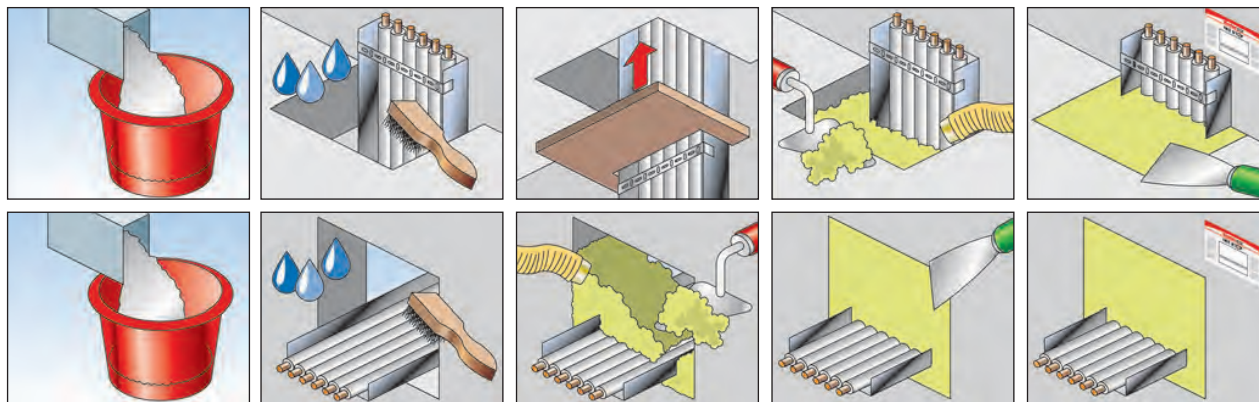
- Water based
- Low VOC
- Load bearing
- Excellent acoustic properties
- Both vertical and horizontal applications
- Halogen and asbestos free

#### APPLICATIONS

- Metallic services with steel and cast iron pipes
- Non-metallic services with FiP intumescent pipe wrap or FFC
- Voids or cavities in floors or walls
- Cable bunches

#### FUNCTIONING

- FFSC is a specially formulated gypsum based compound, which when mixed with water can be trowelled or poured.
- FFSC can provide up to 4 hours integrity and insulation.
- Set within 45 min depending on ambient temperature.
- Capable of accommodating foot traffic within 72 hours.



## INNER ENGINEERING PRODUCTS & SYSTEMS PVT LTD



MAHARASHTRA



GOA



GUJARAT



MADHYA PRADESH



CHHATTISGARH

## INSTALLATION



1. Service penetrations should be rigidly supported as per local building codes or approved standards.
2. Clean all contact surfaces so they are free from loose debris and contaminants such as oil, dirt, grease, wax, old sealant, etc.
3. Pouring: Mix compound with water in 2.5:1 parts by volume. Do not mix weaker than 2:1.
4. Shutter into the opening to ensure a tight fit so that once the required depth of compound is installed, it finishes flush with the floor.
5. Mix and pour compound until the required thickness is achieved.
6. If the opening is greater than 1,200x1,200 mm, appropriate reinforcement may be required.

## SPECIFICATIONS

Item	Art.-No.	Weight	Sales unit
		[kg]	[pcs]
<b>FFSC/20 kg</b>	<b>533247</b>	20	1

## TECHNICAL DATA

Chemical base	Gypsum
Colour	Off white
Weight	20 kg
Bulk density	950 kg/m <sup>3</sup>
Wet density	1,850 kg/m <sup>3</sup>
Setting time (min)	20
Application temperature range	+5 °C to +40 °C
Temperature resistance	-5 °C to +100 °C
Compressive strength	17 N/mm <sup>2</sup>
Sound insulation (Rw partition and specimen)	59 dB
Reaction to fire (EN13501-1)	Class F
Shelf life	12 months
European Technical Approval	ETA 14-0387
Thermal conductivity - EN1745	0.57 W/mK at 50 % / 0.65 W/mK at 90 %
Average yield	4 bags per M <sup>2</sup> at 100 mm thickness

## APPLICATION DATA

	By volume
	Powder to water ratio
<b>Pourable grade</b>	2.5:1
<b>Trowelable grade</b>	3:01

\* These are approximate calculations based on 20 kg bags. The coverage does not take into account the percentage of the hole filled with services.

\*\* As a further safety margin, we would recommend that all floor seals with clear areas greater than 1,100 mm x 1,100 mm must be reinforced.

Load bearing note: the open area free of services: Thickness of seal ratios for non-reinforced seals given above allow an ample safety margin for normal foot traffic, e.g., loads of two men plus equipment with a combined weight up to 200 kg.

**fischer Building Materials India Pvt. Ltd.,**  
Level IV and Level V, Unit No. 401 and 501,  
Prestige Garnet, Ulsoor Road, Bangalore,  
Karnataka, India - 560042.  
Phone - 080-4151 1991/92/93  
Toll Free No. : 1800 121 7188  
**www.fischer.in | info@fischer.in**



### INNER ENGINEERING PRODUCTS & SYSTEMS PVT LTD

Registered Office (Ahmedabad)

Ground Floor, Showroom No. 3, Brooklyn Tower, Next to YMCA Club, S.G Highway, Ahmedabad - 380015, Gujarat, India.

Branch Offices (Pune - Vadodara)

Office No 501, Fifth Floor, Archway, Plot No 5, Sopan Baug Society, Survey No 2/1, Balewadi, Pune- 421045, Maharashtra, India.

713/A, Atlantis Heights, Opp. Swagat Petrol Pump, Nr. Genda Circle, Vadodara - 390021, Gujarat, India.