

## SUPPORT TECHNOLOGY AND VIBRATIONAL CONTROL

Mupro has been one of the leading providers of support and vibration control systems for over 50 years. The German MNC is renowned for functional, high-quality support system solutions for the industrial installation and building services sectors.

### OUR EXCLUSIVE PRODUCTS

#### PIPE CLAMPS



##### Single Bossed Clamps - JUNIOR

- High stiffness due to reinforcing bead
- Tightening bolts with combination cross-head convenient for power driver
- Proven two-piece clamp

DÄMMGULAST® Vibration control lining with green identification stripe



##### Euro-Quick® Type J

- Captive fastening screws with captive washer
- Highly elastic insert
- Safe handling due to rounded flange

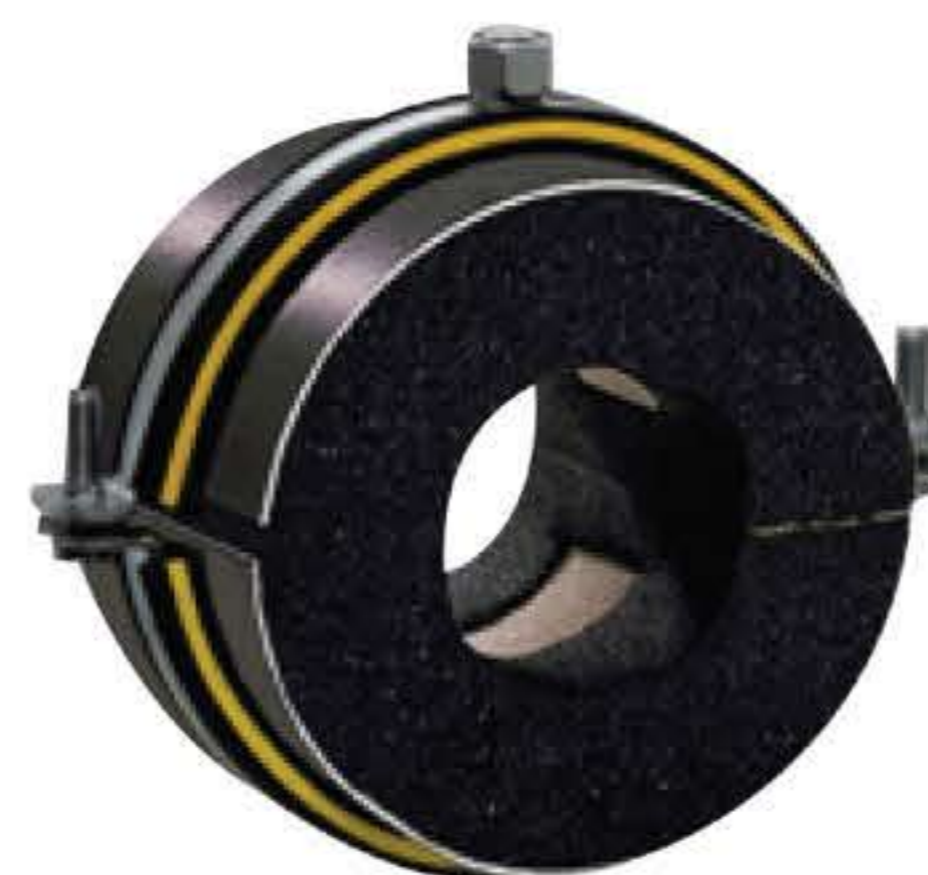
Vibration Control Lining



##### Single Bossed Clamps - Heavy Duty

- Suitable for fixings in industrial areas
- Stronger tightening bolts for high load capacity
- Proven two-part clamp with increased material cross-section

DÄMMGULAST® Vibration control lining with green identification stripe



##### Insulation Clamps Type H, M, T

- Thermal decoupled pipe attachment in the field of refrigeration
- Highly effective insulation through PIR and a synthetic rubber mantle rounded flange



##### Load Distributing Sleeves

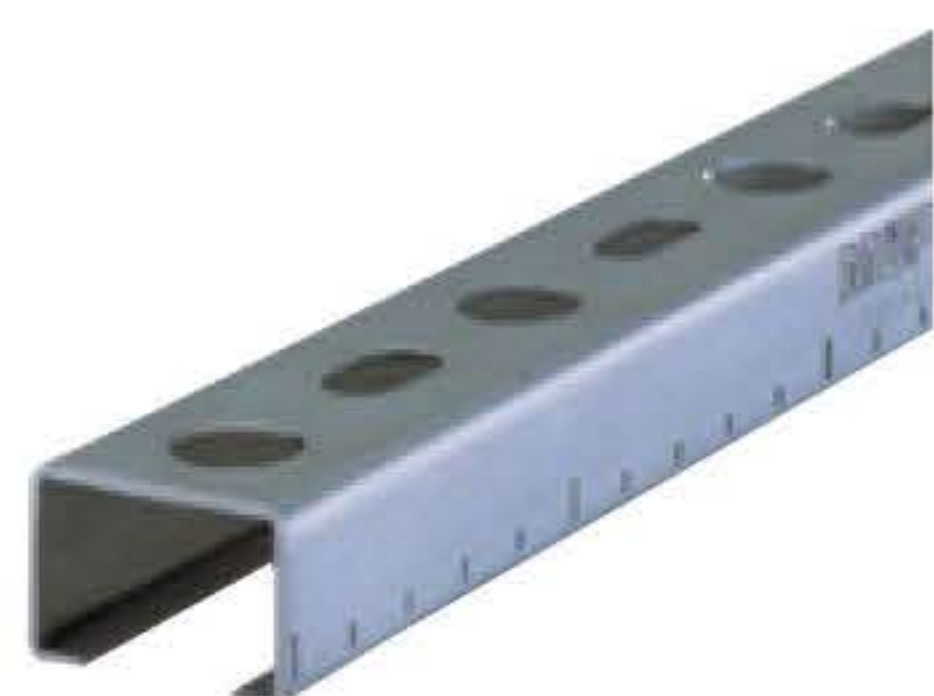
- Insulation clamps with PU shells and load distributing sleeves for large pipe diameters or spacings
- Recommended for pipe diameter of 2" and more



##### Rubber Support Inserts

- A cost effective support for pipes to prevent being crushed under pressure.
- Very high load bearing capacity
- Resistance against vapour diffusion

#### SUPPORT CHANNELS



##### MPC - Support Channels 27/18

- Ideal for pipe installation for air ducts in dry interiors
- Efficient attachment of pipe sections and multiple pipe-ways



##### MPC - Support Channels 38/40

- Ideal for pipe installation for air ducts in dry interiors
- For secure fixing adjustable laterally and vertically



##### Saddle Supports

- Applicable for cramped installation conditions in shafts and ducts.
- Good load transfer due to the high bending stiffness of the saddle connection.
- Ideal connecting element for channel section structures.



##### Girder Cleats

- Attachment of Support channels to steel girders without drilling or welding
- Suitable for steel beams.

## ACCESSORIES



### Hex Connectors

- For the extension and joining of threaded rods and pins
- Robust, galvanized threaded pipe coupling with hexagonal section and a cross hole



### Round Connector

- Connecting element for the combination of slide guides 4.0 kN and threaded pipe 1/2"
- Fast and easy extension and joining of threaded pipes



### Clamping Claws

- Attachment of MPC and MPR Support Channels to profile steel structure without drilling or welding
- Safe fastening without drilling or welding



### Girder Clamps

- For attachment of pipelines, air ducts and sprinkler systems on steel girders
- Subsequent alignment on the girder possible



### Steel Anchor

- Versatile applicable for attachment with screws or threaded rods in all plumbing, heating and ventilation installations.
- Only small drilling depth required
- Flush finish with surface of the building material



### Heavy-duty Anchors BZ

- Attachment of wall hanger brackets, support channels, base plates, constructions made of metal and wood, cable trays, railings, etc.
- Secure anchorage due to slit splaying sleeve with serrations.

Threaded Rod



Washers



Hexagonal Nut



## HANGERS



### Swivel Hanger

- Attachment of sprinkler lines
- Size range from 3/4" to 8"
- Made of Carbon Steel
- Galvanized, other finish available upon request.



### Adjustable Clevis Hanger

- To support suspended pipes
- Size range from 1/2" to 24"
- Made of Carbon Steel
- Galvanized, other finish available upon request.

## PROJECT REFERENCES



Bella De More, Surat



MSPVL Adani, Mundra



Sankalp Hotel, Ahmedabad



Nirmal Poly Plast, Ahmedabad